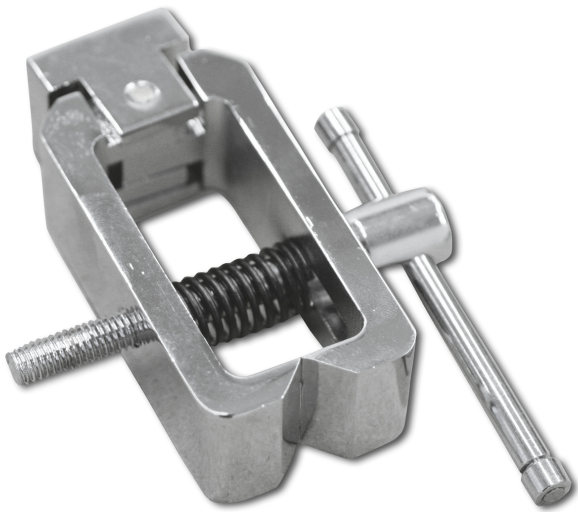


# KERN AC 01

**KERN**

Screw Tension Clamp for tension and rupture tests



## Pictograms

### STANDARD



## Category

Brand	Sauter
Product category	Clamp
Product group	Screw tension clamp

## Construction

Dimensions completely mounted (W×D×H)	75×65×20 mm
Material	steel
Mounting - force dissipation	Threaded hole M6
Tensile/compressive force [Max]	500 N
Maximum clamp width	20 mm
Clamping width	20 mm

## Environmental conditions

Storage temperature [Min]	-10 °C
Storage temperature [Max]	40 °C

## Packing & Shipping

Readability force [d] (N)	1 d
Dimensions packaging (W×D×H)	75×65×20 mm
Net weight	0,43 kg
Shipping method	Parcel service
Net weight approx.	0,45 kg
Gross weight approx.	0,45 kg
Shipping weight	0,435 kg